



LENGTH	34' 4" / 10.46 M
BEAM	10' 0" / 3.05 M
WEIGHT	10,980 LBS
FUEL	180 GALS
HOLDING TANK	40 GALS
WATER CAPACITY	80 GALS
DRAFT	29" / .73 M

2019 C-30 Command Bridge — *Luxury Edition*

FMLC3053C919

STANDARD EQUIPMENT

Performance

Volvo D6 435 HP diesel with color display Fuel flow data display, Single-Lever engine control, electronic controls (Volvo) Thrusters, bow and stern Trim Tabs

Boater Features

Anchor locker, S.S. self launching bow roller Batteries (6) w/charging relay & switch panel Bow platform w/4 rung S.S. ladder (beach access) Bow seats/ fender storage Cockpit table, Cherry, removable Cockpit sink and shower Companion lounge seat Convertible cockpit seats, fold out of gun-wales Docking lights, (2) forward hull Fusion stereo system, (8) speakers, AM/FM, Aux, Bluetooth Hatches (2), forward cabin roof, opening, translucent w/screens Hatches (4), salon house roof, opening, translucent w/ screens Inverter, 2,000w, PSW Mast, stainless steel, hinged Memory foam island berth, master stateroom Mid cabin, 6' 8" cushioned, portlights, lamps, gear storage Opening bulkhead w/reversible dinette seat Portlight, opening, head (1), forward stateroom (5) Powered engine hatch Reversible cockpit seat Rod holders (2) Seawater strainer Sports rack Storage lockers, cabin doors Swim platform w/S.S. 4 rung ladder, integrated fenders Transom door TVs 22" (2) w/DVD, salon and master stateroom (12v) Washdown system, cockpit raw water Water tank level monitor (fresh) Windlass 12V, stainless steel with helm and bow controls

Convenience

Cabin heater, (Engine FWC) Convection oven/ microwave combo (Luxury Edition) Dinette, salon, converts to bed, high/low table, sleeps (2) Euro-style covered galley, Maple Hanging locker Hot water tank, 11 gallon, (Eng – 110V) Microwave (NW Edition) Midship stateroom sleeps two, 110V, 12V, reading light Outlets 110V (5) , Power outlet, 12v stbd side, cockpit, mid berth Private head, shower enclosure, elec. toilet, vanity, portlights Refrigerator/freezer, 12V Sink, hot and cold water system w/demand pump Stovetop, dual burner electric (Luxury Edition) Wine-water cooler, 12V

FACTORY MSRP

2019 CUTWATER C-30 CB—Luxury Edition	\$ 344,937.00
VOLVO D6 435 HP DIESEL	Included
"LUXURY EDITION"	
Air conditioning/rev cycle heat • Anchor Package 22# anchor, 50' HT chain, 200' line • Autopilot, Garmin, dual station w/remote • AGM batteries • Generator, 5KW diesel w/sound shield • LED lights • Macerator discharge • Navigation package, Garmin 8612xsv (2) lower helm, 8612 bridge, chartplotters w/sonar, xHD radar • Safety kit • Solar panel, w/control panel • Swim platform rails • Thruster wireless remote (bow and stern) • Underwater	Included
COMMAND BRIDGE BIMINI TOP w/ Boot	3,970.00
PHIFERTEX WINDOW COVERS	Included
LOW SPEED MODULE	2,000.00
ROCKET LAUNCHERS -Arch w/ (6) Rod Holders	1,050.00
BOTTOM PAINT	1,800.00
VOLVO 5-YR EXTENDED Warranty Coverage	1,500.00
SAFETY KIT	Included
FREIGHT / PREP	4,570.00
TOTAL	\$ 359,827.00
FACTORY/DEALER SALES EVENT DISCOUNT	(— \$ 25,000.00)
ADDITIONAL DEALER DISCOUNT	(— \$ 5,327.00)

CALIF SKIER SALE PRICE: \$ 329,500.00

Plus Tax / Dmv



\$ 1,872.92

Monthly* (OAC)
 C-30 CB Listed Pkg
 20% Down (\$71,008.05)
 @ 4.99% for 240 Months

*sales tax may vary upon county



CUTWATER 30 CB



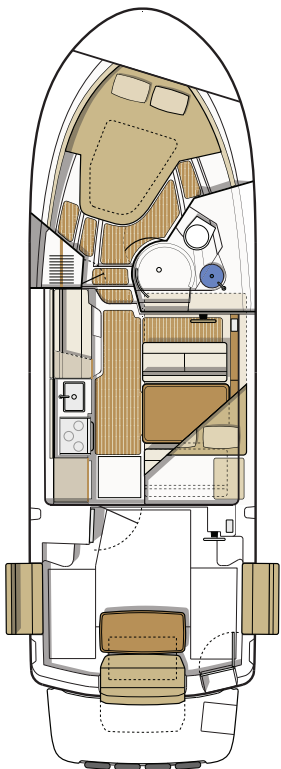
The C-30 CB is the Command Bridge version of the stylish C-30. It features upper and lower helm stations for expanded cruising options. With seating for four on the command bridge and a reversible helm seat that flips to face the aft seat and table, you and your guests can enjoy the best view in the harbor. The C-30 CB features a retractable fiberglass command bridge dash for trailering that enables distant locations to be within easy reach. Access to the command bridge is made safe via secure stairs and hand rails.

This family cruiser offers all the advantages of Cutwater's exclusive stepped keel hull design, in a large boat that provides spacious interior room, a long list of standard features and comfortable onboard living. An ingenious new cockpit seating arrangement welcomes up to seven adults without crowding, and a euro-style galley conceals appliances beneath a hinged counter-top that is ideal for buffet or refreshment service.

The Cutwater 30 Command Bridge accommodates six guests in three separate berths, for exceptional privacy and comfort even on extended cruises. On the foredeck, two flush hatches open to reveal cushioned, secure observation seats, along with a central forward lounge. Add to this a long list of other features, and the reliable performance of the 435-h.p. Volvo diesel engine for efficient express service to distant waterways, and you have a versatile cruiser that ensures unsurpassed enjoyment, year after year.

Specifications

LOA molded	30' 0"	9.14 m
LOA rigged (with swim & pulpit)	34' 4"	10.46 m
Bridge clearance (bridge folded)	9' 9"	2.97 m
Beam	10' 0"	3.05 m
Draft	29"	.73 m
Height on trailer	13' 2"	4.01 m
Length on trailer	40' 2"	12.24 m
Fuel capacity	180 U.S. Gal	681.4 L
Water capacity	80 U.S. Gal	302.8 L
Holding tank capacity	40 U.S. Gal	151.4 L
Weight (dry)	10,980 lbs	4,980 kg
Engine	Volvo D6, 435 HP	Common Rail Electronic Engine



Standard Features

Performance

Volvo D6 435 HP diesel with color display
 Fuel flow data display
 Single-Lever engine control, electronic controls (Volvo)
 Thrusters, bow and stern
 Trim Tabs



Boater Features

Anchor locker, S.S. self launching bow roller
 Batteries (6) w/charging relay & switch panel
 Bow platform w/4 rung S.S. ladder (beach access)
 Bow seats/ fender storage
 Cockpit table, Cherry, removable
 Cockpit sink and shower
 Companion lounge seat
 Convertible cockpit seats, fold out of gunwales
 Docking lights, (2) forward hull
 Fusion stereo system, (8) speakers, AM/FM, Aux, Bluetooth
 Hatches (2), forward cabin roof, opening, translucent w/screens
 Hatches (4), salon house roof, opening, translucent w/screens
 Inverter, 2,000w, PSW
 Mast, stainless steel, hinged
 Memory foam island berth, master stateroom
 Mid cabin, 6' 8" cushioned, portlights, lamps, gear storage
 Opening bulkhead w/reversible dinette seat
 Portlight, opening, head (1), forward stateroom (5)
 Powered engine hatch
 Reversible cockpit seat
 Rod holders (2)
 Seawater strainer
 Sports rack
 Storage lockers, cabin doors
 Swim platform w/S.S. 4 rung ladder, integrated fenders
 Transom door
 TVs 22" (2) w/DVD, salon and master stateroom (12v)
 Washdown system, cockpit raw water
 Water tank level monitor (fresh)
 Windlass 12V, stainless steel with helm and bow controls

Convenience

Cabin heater, (Engine FWC)
 Convection oven/ microwave combo (Luxury Edition)
 Dinette, salon, converts to bed, high/low table, sleeps (2)
 Euro-style covered galley, Maple
 Hanging locker
 Hot water tank, 11 gallon, (Eng - 110V)
 Microwave (NW Edition)
 Midship stateroom sleeps two, 110V, 12V, reading light
 Outlets 110V (5)

Power outlet, 12v stbd side, cockpit, mid berth
 Private head, shower enclosure, elec. toilet, vanity, portlights
 Refrigerator/freezer, 12V
 Sink, hot and cold water system w/demand pump
 Stovetop, dual burner electric (Luxury Edition)
 Wine-water cooler, 12V

Construction

Bonded 12V electrical system
 Bronze rudder, propeller, and thru-hulls
 Fiberglass cockpit liner, self bailing w/non-skid
 Fiberglass stringer system
 S.S. cleats, rails, ext. hardware
 Shorepower 30 amp/115v, w/50' cord
 Teak and holly cabin sole
 Vinylester barrier coat (hull)

Safety

Bilge pumps, (2) 12V auto, high bilge alarm
 Carbon Monoxide detector (2), 12V
 Courtesy lights, cockpit, transom platform
 Horns, electric dual trumpet
 Illuminated Compass
 Navigation lights, with light boards
 VHF radio, Garmin with antenna, DSC capable
 Windshield wipers (2)

Additional Factory Options

Aft cockpit sun and sunset shades	\$1,500
Aft cockpit bimini top with boot	\$3,440
Aft steering, second station with electronic controls	\$4,970
Aluminum triple axle trailer, electric/hydraulic brakes, spare tire w/bracket	\$15,600
Cockpit ice maker in lieu of standard refrigerator	\$470
Dinghy, inflatable RIB 290 CSM hypalon with Weaver davits, stand-off & winch	\$5,125
Dinghy motor, Yamaha F2.5, 4-stroke, storage bracket	\$1,115
Dinghy motor, Yamaha F6, 4-stroke, storage bracket	\$1,945
Dinghy motor, Yamaha F9.9 4-stroke, storage bracket	\$2,935
Factory Delivery Experience	\$2,500
Garmin Weather Antenna	\$1,000
Hull color upgrade, Midnight Blue	\$7,500
International option, 240v	\$900
Low speed module	\$2,000
Rocket launchers, arch with rod holders (6)	\$1,050

Cutwater 30 CB Value Package FACTORY DIRECT PRICING

All Cutwater 30's are sold **fully-equipped** and **ready to cruise**. There are two packages to choose from, the Luxury Edition with a diesel generator and air conditioning or the Northwest Edition with a diesel forced air furnace, propane stove and oven, and downrigger plugs and pads.

Northwest Edition Includes:

- Anchor Package 22# anchor, 50' HT chain, 200' line
- Autopilot, Garmin, dual station w/remote
- AGM batteries
- **Diesel heater, forced air furnace**
- **Downrigger plugs and pads**
- LED lights
- Macerator discharge
- Navigation package, Garmin 8612xsv (2) lower helm, 8612 bridge, chartplotters w/sonar, xHD radar
- Safety kit
- Solar panel, w/control panel
- **Propane stove and oven with tanks (2) and locker**
- Swim platform rails
- Thruster wireless remote (bow and stern)
- Underwater lights

FULLY EQUIPPED, READY TO CRUISE FROM:

\$329,937.00*

*Options, freight & taxes extra

Prices, specifications, equipment and options may change without notice. 0819



MADE IN USA



Luxury Edition Includes:

- **Air conditioning/rev cycle heat**
- Anchor Package 22# anchor, 50' HT chain, 200' line
- Autopilot, Garmin, dual station w/remote
- AGM batteries
- **Generator, 5KW diesel w/sound shield**
- LED lights
- Macerator discharge
- Navigation package, Garmin 8612xsv (2) lower helm, 8612 bridge, chartplotters w/sonar, xHD radar
- Safety kit
- Solar panel, w/control panel
- Swim platform rails
- Thruster wireless remote (bow and stern)
- Underwater lights

FULLY EQUIPPED, READY TO CRUISE FROM:

\$344,937.00*



17341 Tye St. S.E.
 Monroe, Washington 98272
 Phone 800.349.7198
www.CutwaterBoats.com